

CASE TRACTOR ENGINE

1" SCALE



This model is based on the traction engines produced by the Case company in USA. These engines were built from the mid 1800 to the early 1900 and are typical of the style used by many American manufacturers. It has a single cylinder mounted on a cast frame, and a constant mesh gear drive with a clutch mechanism built into the flywheel. There is full spring suspension on the rear axle with the gears kept in alignment by a swing link system. The model is gas fired with twin flue burners, and superheater. It comes complete with the dome, feed water heater and governor as detailing.

SPECIFICATIONS

Scale	1"
Dimensions	21 3/4 x 7 3/4 x 10 1/2 in.
Weight	22.5 lbs
Construction	Brass & stainless steel
Cylinder	22 x 24 mm
Power	Live steam, butane fired
Working Pressure	100 psi
Features	One cylinder w/ drain valve
	Lubricator
	Frick valve gear
	Pressure gauge

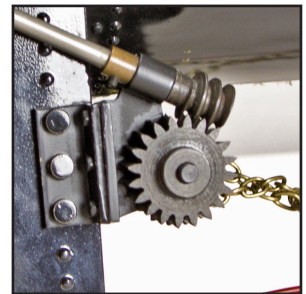
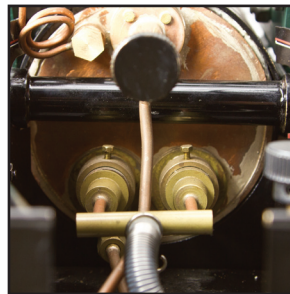
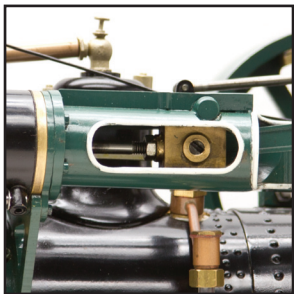
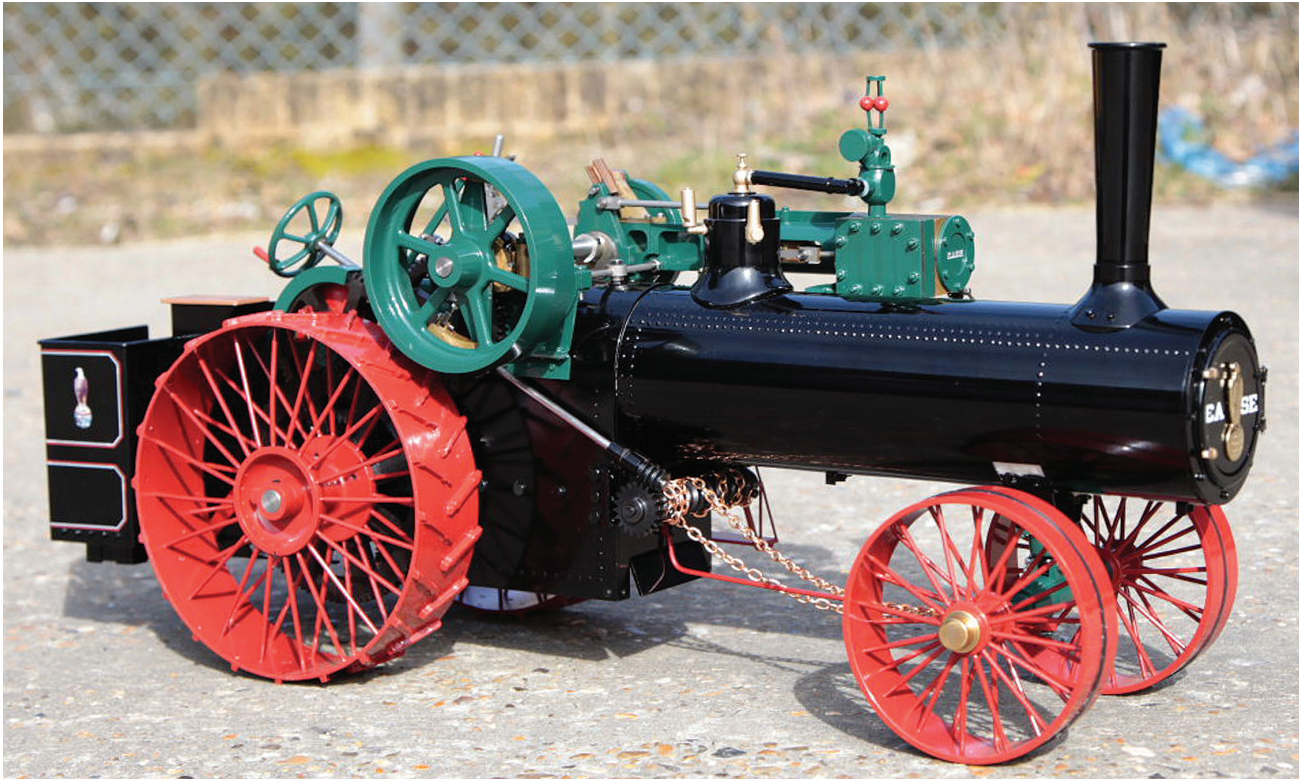
ITEMS SUBJECT TO CHANGE IN PRICE, COLOR, SPECIFICATION, DESIGN AND AVAILABILITY WITHOUT NOTICE.

ACCUCRAFT
RIDE-ON TRAINS

33268 CENTRAL AVE, UNION CITY, CA 94587, USA TEL: (510) 324-3399 FAX: (510) 324-3366
WWW.ACCUCRAFTRIDEON.COM

CASE TRACTOR ENGINE

1" SCALE



ORDER INFORMATION

SKU	Description
T390-51	Case, Butane Fired

ITEMS SUBJECT TO CHANGE IN PRICE, COLOR, SPECIFICATION, DESIGN AND AVAILABILITY WITHOUT NOTICE.

ACCUCRAFT
RIDE-ON TRAINS

33268 CENTRAL AVE, UNION CITY, CA 94587, USA TEL: (510) 324-3399 FAX: (510) 324-3366
WWW.ACCUCRAFTRIDEON.COM